



Yell, Unst & Fetlar

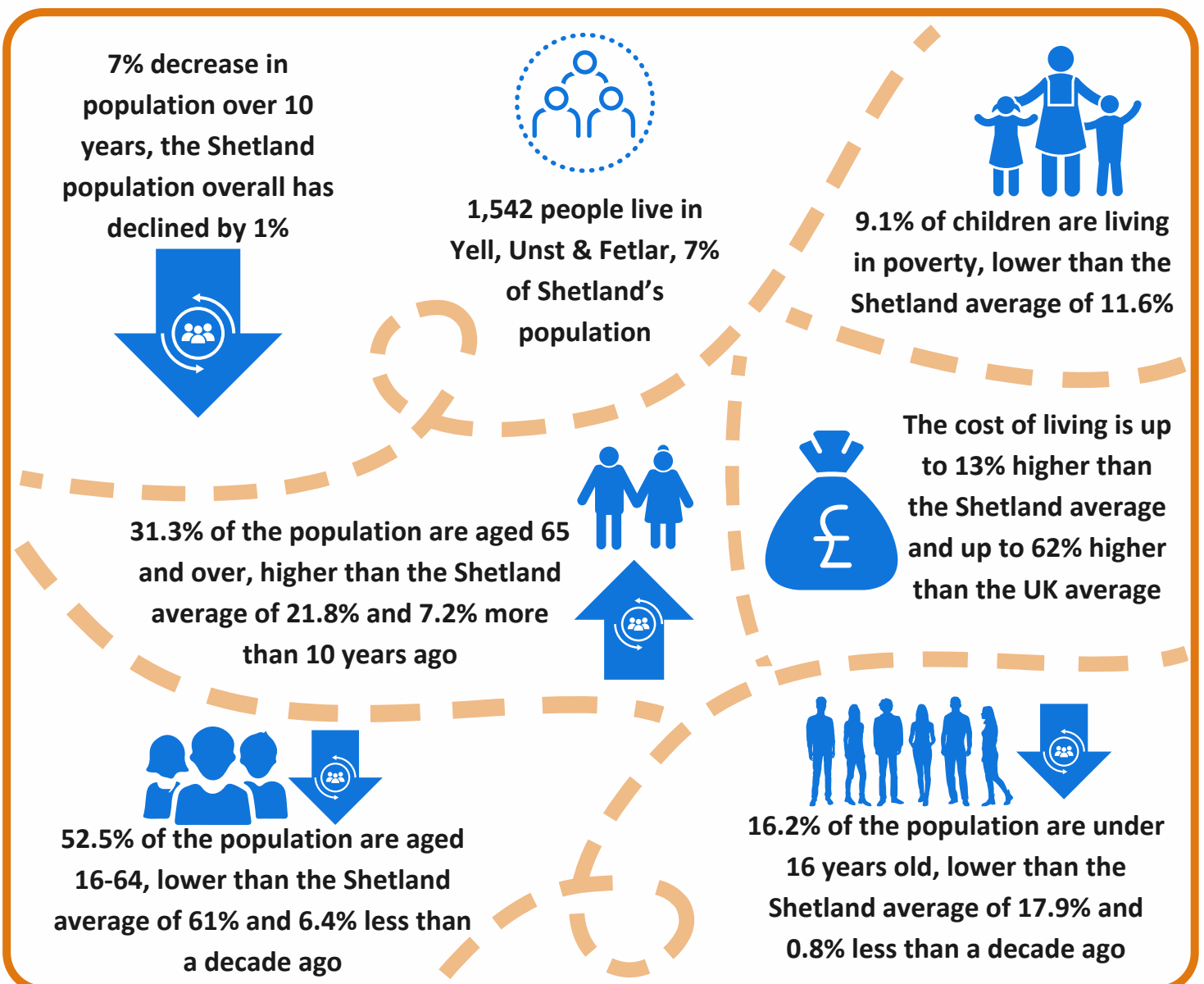


Yell, Unst and Fetlar are all different in character. Known for unique plant and birdlife, the islands are rich in archaeology, including Viking finds. They are home to a number of beaches, including an award winning Blue Flag beach in Yell. Crofting and farming are important across the isles, as is fishing and aquaculture, with fish landing at Cullivoe.

Unst is the most northerly island in Britain, with a National Nature Reserve at Hermaness. Fetlar is known as the Garden of Shetland due to its fertile soil, and is famous for birdlife including the Red Necked Phalarope. Yell is the second largest island in Shetland, is part of the Carbon Neutral Islands project, and has nationally important nature reserves such as the RSPB's Lumbister site.

There are a range of community run facilities, including 4 heritage centres between the islands. Unst also has the community managed Gardiesfauld Youth Hostel. There are 5 shops in Yell, 1 in Fetlar and 3 in Unst. There are health centres in Unst and Yell, with a Health Care Support Worker in Fetlar. There are schools in Yell and Unst for primary and secondary pupils, with a further 2 primary schools across the islands. Unst and Yell also have leisure centres. Communities put on events throughout the year.

Buses run from Lerwick to the ferry terminal at Toft, the access point to the islands, with buses to all the isles running Monday to Saturday. Ferries to and between the three isles take from 10-25 minutes, depending on departure point and arrival destination.





9 sites considered the best for
Wildlife in Europe
(international designations)

13 Local Nature
Conservation Sites



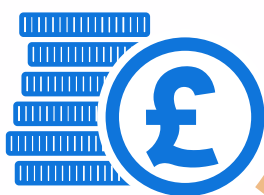
29 Sites of Special Scientific Interest,
there are 78 in Shetland

The school roll
is 187



100% of 16-19 year olds are
in education, training or
employment, the Shetland
average is 97.4%

Median income is
25.7% lower than the
Shetland average and
23.1% less than the
Scottish average



The average house price
is £123,000, the Shetland
average is £178,000

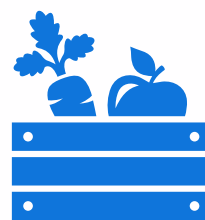


13% of the
population report
feeling lonely, the
Shetland average is
17%



45% of the population report
growing and eating their own
produce, the Shetland average is

30%



9.6% of the population
claim out of work
benefits, the Shetland
average is 8.8%



68% of the population
report being physically
active on 5+ days per week,
the Shetland average is 58%



18.4% of the
population report
drinking alcohol at
a harmful or
hazardous level;
the Shetland
average is 17.7%



Locality Profiles are intended to be useful for both communities and partners to provide detailed information at a local level, for purposes including service redesign, local plans and maximising opportunities to seek external funding to support community development. Profiles have been created for each of the 7 localities in Shetland. Statistics should be treated with caution due to small numbers, and figures can fluctuate significantly. A separate profile for Fetlar is also available.

Data Sources: CACI Paycheck 2022; Highlands and Islands Enterprise - Minimum Income Standard 2016; Improvement Service 2023; National Records Scotland (NRS) Population estimates 2021; NHS Shetland Population Health Survey 2021; Scottish Government: House Prices - Residential Properties Sales and Price 2022; Shetland Islands Council Local Development Plan 2014 Appendix III Environmental Baseline; Shetland Islands Council 2023; Skills Development Scotland, Annual Participation Measure 2023. Definitions, full details and links can be found on the Shetland Partnership website.