



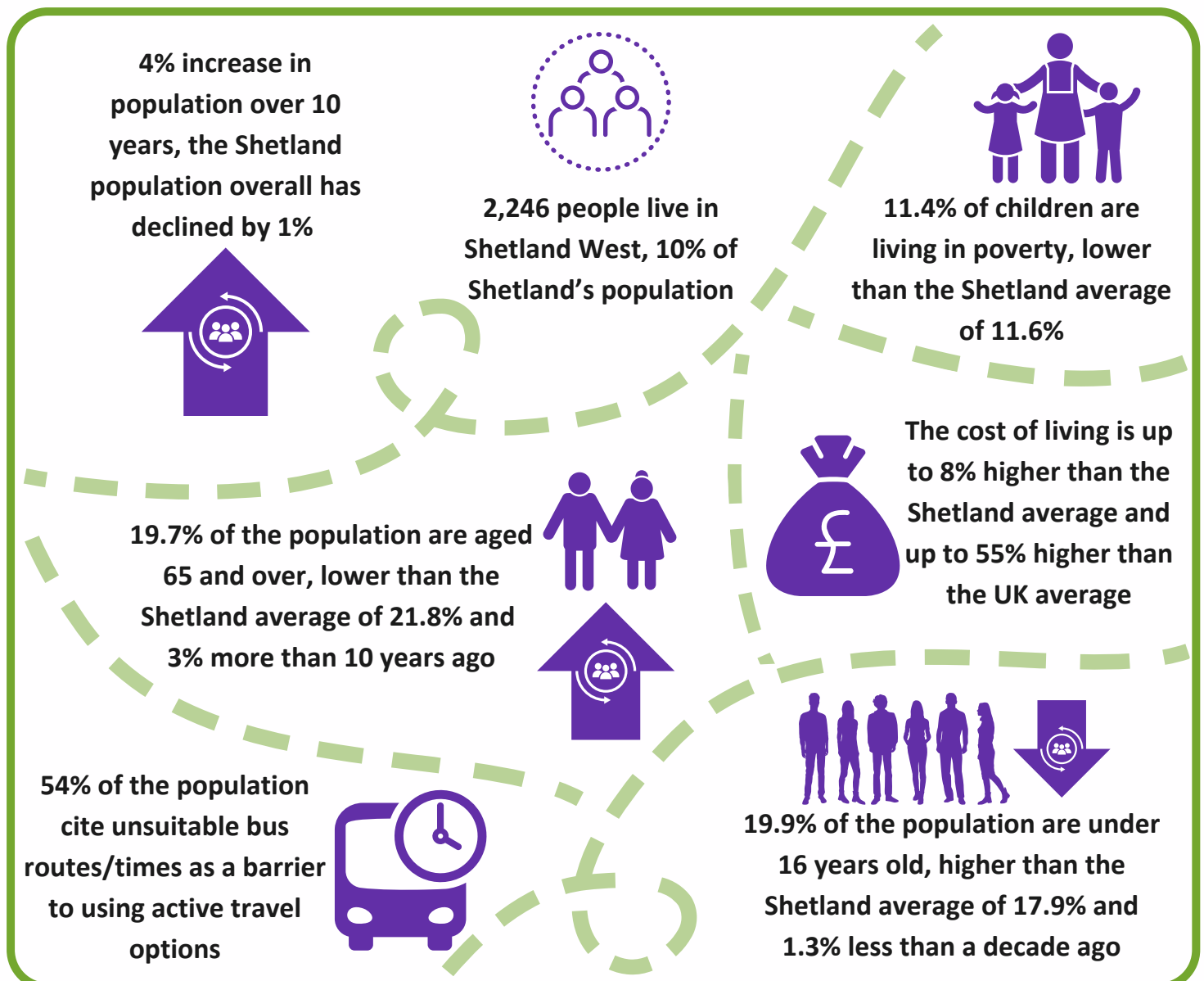
Shetland West



Shetland West spans from Tresta to Sandness, Aith to Skeld and includes the remote islands of Foula and Papa Stour. The coastline varies from dramatic cliffs to long, sea lochs, or 'voes', reaching far into a landscape of heathery hills and green crofts. There is a ferry service to Papa Stour, and ferry and air services to Foula.

The main settlements are: Tresta, Bixter, Aith, Reawick, Skeld, Walls and Sandness. A strong crofting community, aquaculture is also important, with many fish and shellfish farms and inshore fishing boats. Textiles also play a significant role here. The area is served by a Junior High School in Aith and Primary schools in Skeld, Walls and Sandness.

Facilities include health centres in Walls and Bixter, and there is a shop, pier, marina and leisure centre in Aith. There are shops in Bixter and Walls, as well as a veterinary surgery in Bixter. In Sandness there is a textiles mill. There are several piers, marinas, and a range of community run facilities throughout the area. Shetland West is also home to Michaelswood in Aith, and Da Gairdins located in Sand.





5 sites considered the best for
Wildlife in Europe (international
designations)

5 Local Nature
Conservation Sites



17 Sites of Special Scientific
Interest

The school roll
is 301



97.9% of 16-19 year olds are
in education, training or
employment. The Shetland
average is 97.4%

Median income is
1.9% lower than the
Shetland average
and 1.6% more than
the Scottish
average



The average house price
is £175,450, the Shetland
average is £178,000



16% of the
population report
feeling lonely, the
Shetland average is
17%



36% of the population report
growing and eating their own
produce, the Shetland
average is 30%



6.4% of the population
claim out of work
benefits, the Shetland
average is 8.8%



61% of the population
report being physically
active on 5+ days per week,
the Shetland average is 58%



17.9% of the
population report
drinking alcohol at
a harmful or
hazardous level;
the Shetland
average is 17.7%



Locality Profiles are intended to be useful for both communities and partners to provide detailed information at a local level, for purposes including service redesign, local plans and maximising opportunities to seek external funding to support community development. Profiles have been created for each of the 7 localities in Shetland. Statistics should be treated with caution due to small numbers, and figures can fluctuate significantly. Separate profiles are available for Foula and Papa Stour.

Data Sources: CACI Paycheck 2022; Highlands and Islands Enterprise - Minimum Income Standard 2016; Improvement Service 2023; National Records Scotland (NRS) Population estimates 2021; NHS Shetland Population Health Survey 2021; Scottish Government: House Prices - Residential Properties Sales and Price 2022; Shetland Islands Council Local Development Plan 2014 Appendix III Environmental Baseline; Shetland Islands Council 2023; Skills Development Scotland, Annual Participation Measure 2023. Definitions, full details and links can be found on the Shetland Partnership website.