



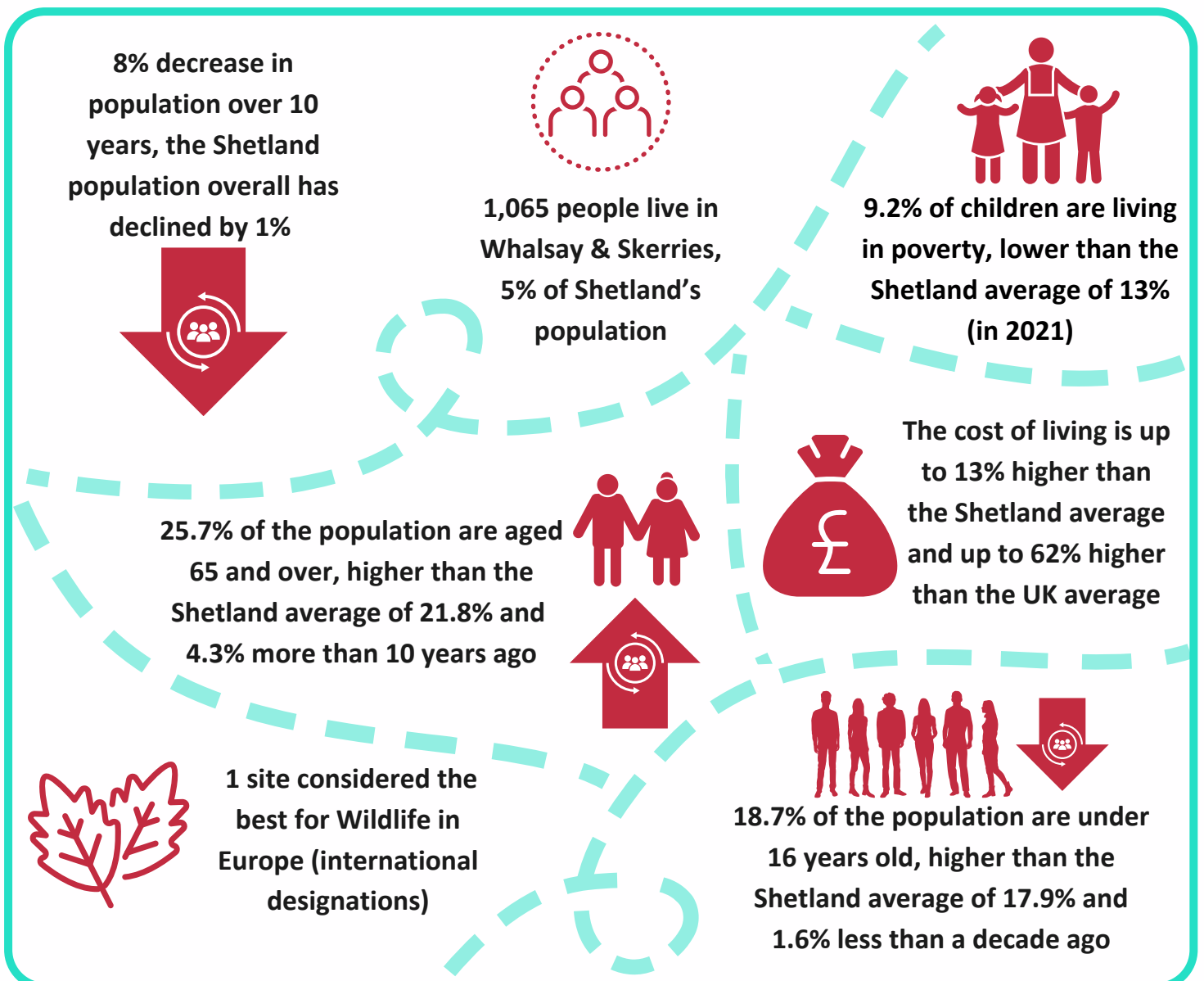
Whalsay & Skerries

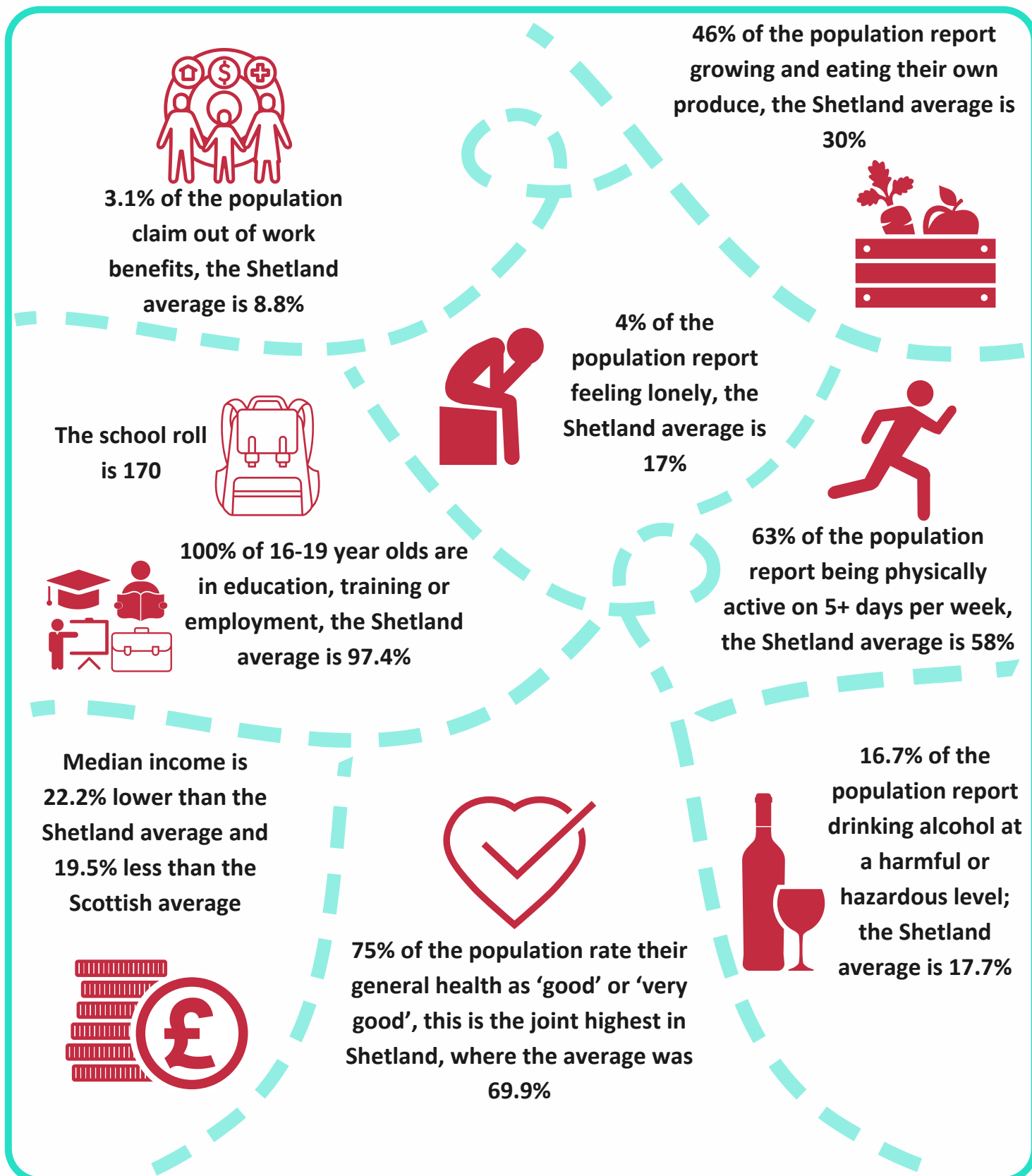


Whalsay and Skerries are island communities that lie off the east coast of the Shetland mainland. Both are accessed by roll-on-roll-off ferries. The Whalsay ferry runs regularly 7 days a week and the journey takes 30 minutes. The Skerries ferry runs 6 days a week, with journeys taking 90 minutes or 2.5 hours depending on departure point.

Whalsay is a proud fishing community, home to a fleet of locally owned fishing vessels as well as plenty of smaller boats and sea craft. There are high levels of employment in the public sector as well as private businesses, such as aquaculture. Crofting is also an important way of life. Whalsay is one of the more densely populated of the Shetland Islands. Much of the infrastructure has been built up through community fund-raising, it has a harbour; nursery, primary and secondary schools; health centre & dental surgery; residential care home; leisure centre; heritage centre; boating club; pub; youth centre; café; snooker club, all-weather pitch, golf course and several other community run facilities. Many of these were built over 50 years ago.

Skerries is popular with birdwatchers and visiting yachts, with around 35 permanent residents. It has a community hall, two shops with one housing the post office, a kirk and a new waiting room at the pier (built by the Skerries Development Group in partnership with Shetland Islands Council).





Locality Profiles are intended to be useful for both communities and partners to provide detailed information at a local level, for purposes including service redesign, local plans and maximising opportunities to seek external funding to support community development. Profiles have been created for each of the 7 localities in Shetland. Statistics should be treated with caution due to small numbers, and figures can fluctuate significantly. A separate profile for Skerries is also available.

Data Sources: CACI Paycheck 2022; Highlands and Islands Enterprise - Minimum Income Standard 2016; Improvement Service 2023; National Records Scotland (NRS) Population estimates 2021; NHS Shetland Population Health Survey 2021; Scottish Government: House Prices - Residential Properties Sales and Price 2022; Shetland Islands Council Local Development Plan 2014 Appendix III Environmental Baseline; Shetland Islands Council 2023; Skills Development Scotland, Annual Participation Measure 2023. Definitions, full details and links can be found on the Shetland Partnership website.