



# Shetland Central

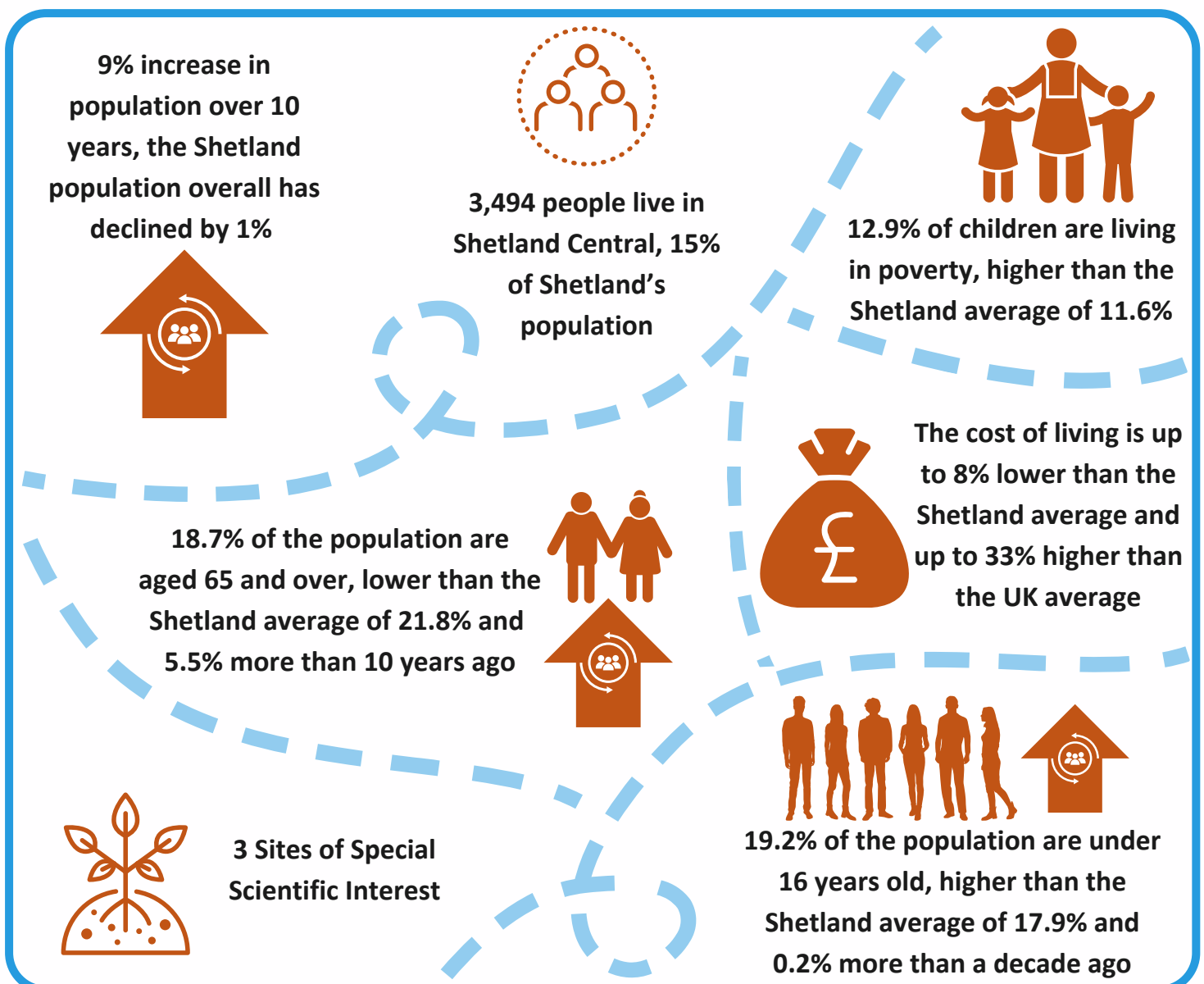


Covering Whiteness and Weisdale, Scalloway, Burra, Trondra, Tingwall and Girdsta, the Shetland Central Locality contains a variety of communities, with a growing population. A rich agricultural area, there is abundant farming land; aquaculture and fisheries play an important part too.

Some communities have little infrastructure, whereas others have a range of facilities. The main settlements are accessible by bus, approximately 10-20 minutes by car from Lerwick. There are four primary schools, in Hamnavoe, Tingwall, Scalloway and Whiteness.

Shetland's Ancient Capital, Scalloway, has well established childcare, a health centre, swimming pool, shops, grocers, hairdressers, restaurants, caravan park and a museum. The harbour, home to the Scalloway Fish Market, plays an important role in fisheries, aquaculture and the oil and gas industries. UHI Shetland's Scalloway campus is also key to the marine industries.

The islands of Trondra, and East and West Burra are linked by bridge, encompassing boat marinas, harbour, farms, beaches and arts and crafts studios. The airport linking the outer isles is located in Tingwall, as is a garden centre. In Whiteness and Weisdale there are shops, craft studios, a gallery, a restored mill and Shetland's largest woodland.





3 sites considered the best for Wildlife in Europe (international designations)

34% of the population report growing and eating their own produce, the Shetland average is 30%



6 Local Nature Conservation Sites



9.1% of the population claim out of work benefits, the Shetland average is 8.8%



The school roll is 426



97.5% of 16-19 year olds are in education, training or employment, the Shetland average is 97.4%



64% of the population report being physically active on 5+ days per week, the Shetland average is 58%

Median income is 13.2% higher than the Shetland average and 17.1% more than the Scottish average



20% of the population report feeling lonely, the Shetland average is 17%



14.4% of the population report drinking alcohol at a harmful or hazardous level; the Shetland average is 17.7%



The average house price is £207,583, the Shetland average is £178,000



Locality Profiles are intended to be useful for both communities and partners to provide detailed information at a local level, for purposes including service redesign, local plans and maximising opportunities to seek external funding to support community development. Profiles have been created for each of the 7 localities in Shetland. Statistics should be treated with caution due to small numbers, and figures can fluctuate significantly.

Data Sources: CACI Paycheck 2022; Highlands and Islands Enterprise - Minimum Income Standard 2016; Improvement Service 2023; National Records Scotland (NRS) Population estimates 2021; NHS Shetland Population Health Survey 2021; Scottish Government: House Prices - Residential Properties Sales and Price 2022; Shetland Islands Council Local Development Plan 2014 Appendix III Environmental Baseline; Shetland Islands Council 2023; Skills Development Scotland, Annual Participation Measure 2023. Definitions, full details and links can be found on the Shetland Partnership website.