



Shetland

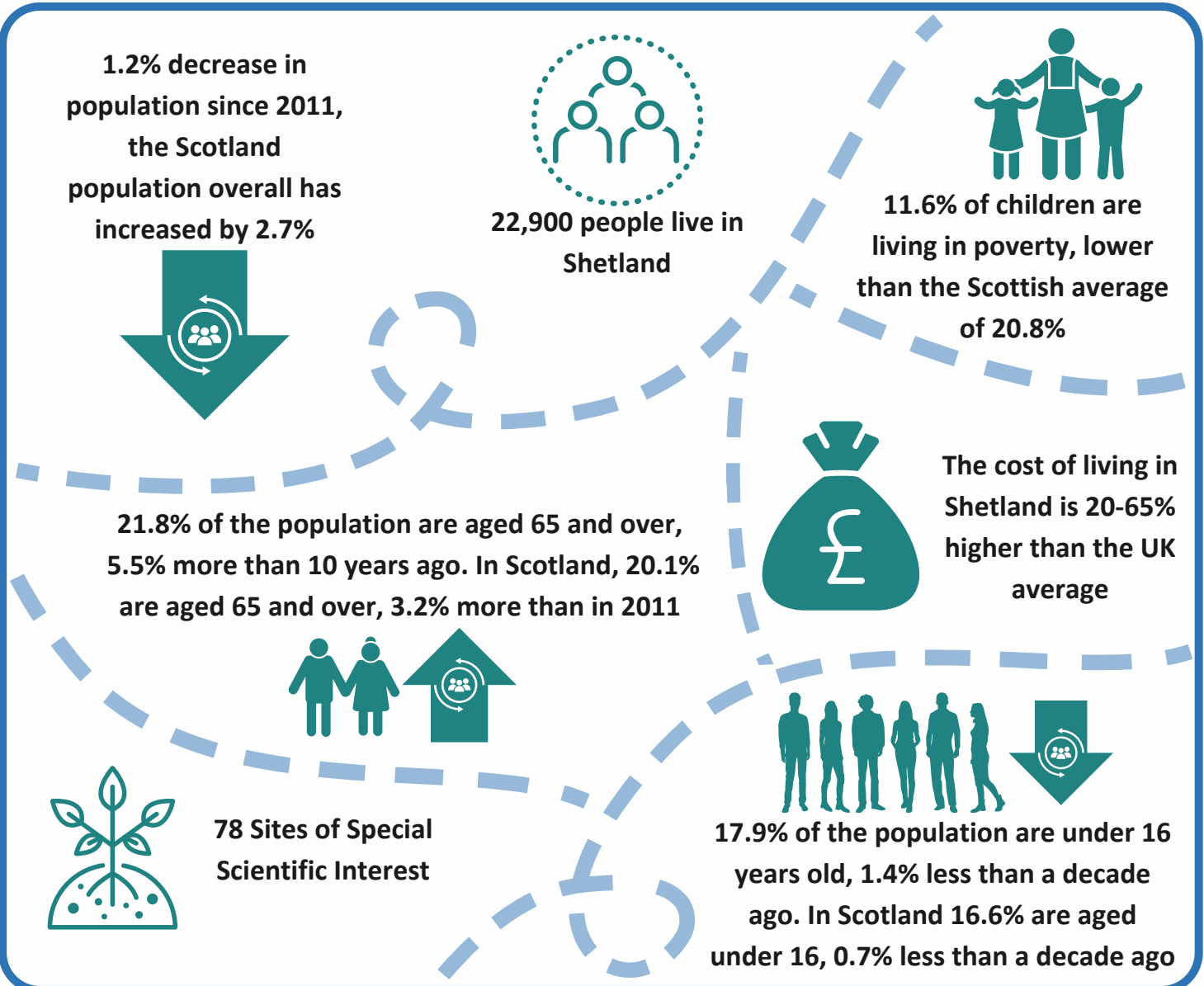


Shetland is an archipelago in the North Sea, sitting at a latitude of 60 degrees north. There is a population of 22,900, with communities spread throughout. Shetland is known for its unique culture, with its own dialect; for its wildlife, beautiful coast, varied landscape, geology and heritage; and events such as the Up Helly Aa Fire Festivals, Shetland Wool Week and the Shetland Folk Festival. Volunteering is important to communities across Shetland.

There are 7 localities within Shetland; Shetland Central, Shetland North, Shetland South, Shetland West, Lerwick and Bressay, Yell, Unst & Fetlar, and Whalsay & Skerries. For each locality there is a separate profile with information specific to those areas, with additional profiles for the smaller isles.

Infrastructure and facilities vary throughout Shetland. There are 29 Schools, including 2 high schools, 4 junior high schools and 23 primary schools. Shops range from local stores to larger chain supermarkets; and there are an abundance of community facilities, including 47 community halls. Health centres can be found across all localities as well as leisure centres.

Transport around Shetland includes bus routes, ferries to the islands and flights to two of the remote islands. Getting to and from Shetland is by overnight ferry from Aberdeen or Kirkwall, or by flight (leaving and arriving at Sumburgh Airport).





32 sites considered the best for Wildlife in Europe (international designations)

30% of the population report growing and eating their own produce



49 Local Nature Conservation Sites



8.8% of the population claim out of work benefits, the Scottish average is 14.8%

The school roll is 3587



58% of the population report being physically active on 5+ days per week



97.4% of 16-19 year olds are in education, training or employment. The Scottish average is 94.3%

17% of the population report feeling lonely, the Scottish average, based on the Scottish Household Survey is 35%



17.7% of the population report drinking alcohol at a harmful or hazardous level, the Scottish average, based on the Scottish Health Survey, is 23%

Median income is £34,251, this is 3% higher than the Scottish average of £33,095



The average house price is £178,000, around the Scottish average of £180,000



Locality Profiles are intended to be useful for both communities and partners to provide detailed information at a local level, for purposes including service redesign, local plans and maximising opportunities to seek external funding to support community development. This Shetland Profile includes the data at a Shetland level, compared to Scotland where possible. The Profiles created for each of the 7 localities compare to the Shetland figures where possible.

Data Sources: CACI Paycheck 2022; Highlands and Islands Enterprise - Minimum Income Standard 2016; Improvement Service 2023; National Records Scotland (NRS) Population estimates 2021, Rounded Population estimates (Census) 2022; NHS Shetland Population Health Survey 2021; Scottish Government: House Prices - Residential Properties Sales and Price 2022; Shetland Islands Council Local Development Plan 2014 Appendix III Environmental Baseline; Shetland Islands Council 2023; Skills Development Scotland, Annual Participation Measure 2023; Scottish Health Survey 2021; Scottish Household Survey 2020. Definitions, full details and links can be found on the Shetland Partnership website.